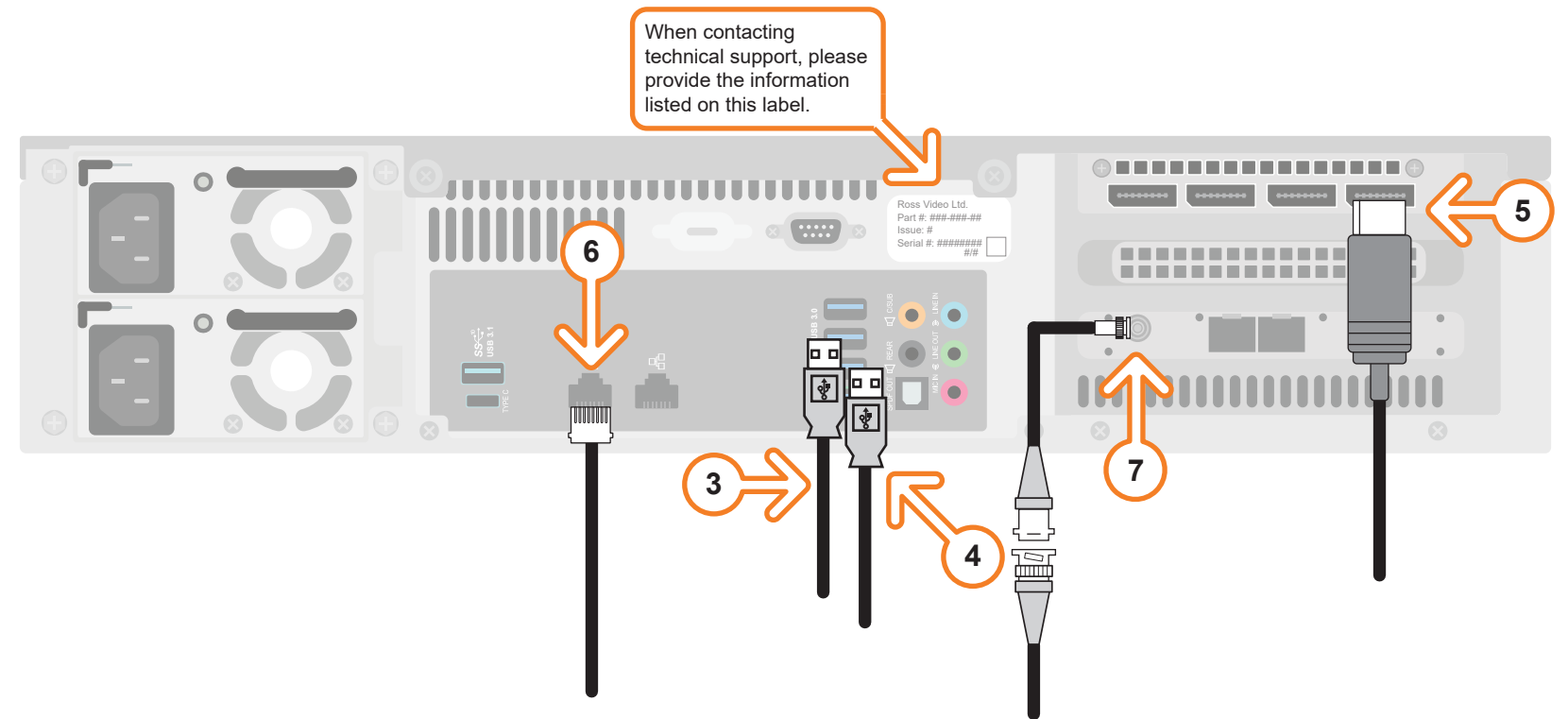
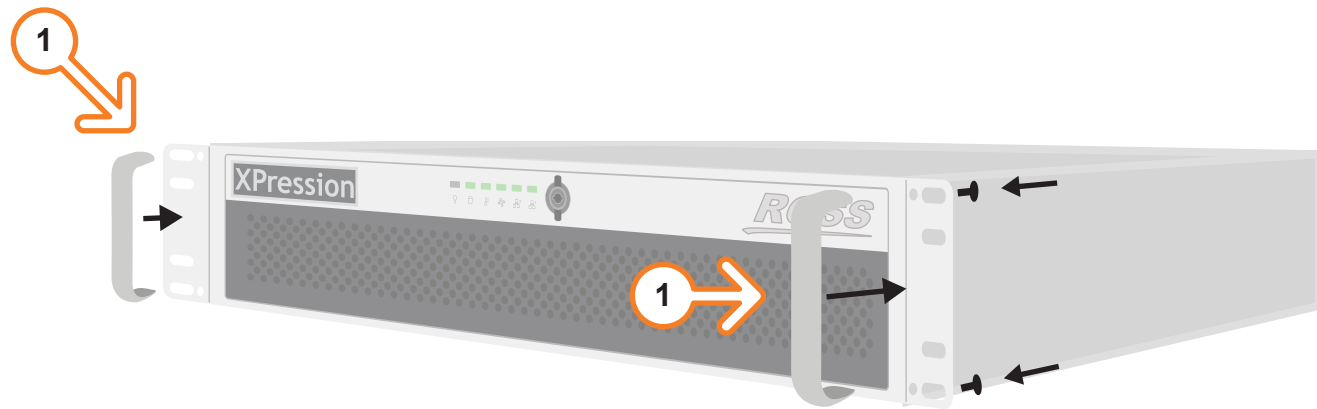


# XPression

## Getting Started

⚠ CAUTION: Before you set up and operate this product, see the “Important Safety Instructions” in your Manual.



- 1 Attach the handles to the front rack-mount tabs by aligning the handle with the round holes and fastening from the rear with the supplied screws.
- 2 Use the supplied Rack Mount Kit to mount the XPression system in a 19" EIA equipment rack.  
*For information on installing the XPression chassis in a rack, see the provided document “Installing the Chassis in a Rack”.*  
*To avoid overheating, DO NOT obstruct the front air intake, rear exhaust vents, or side exhaust vent of the chassis.*
- 3 Plug the supplied Keyboard into a **USB** port.
- 4 Plug the supplied Mouse into a **USB** port.
- 5 Connect a Monitor (customer supplied) to any of the four display ports.  
*KVM extenders (customer supplied) are required when the XPression system monitor, keyboard, and mouse are located remotely from the rack room.*

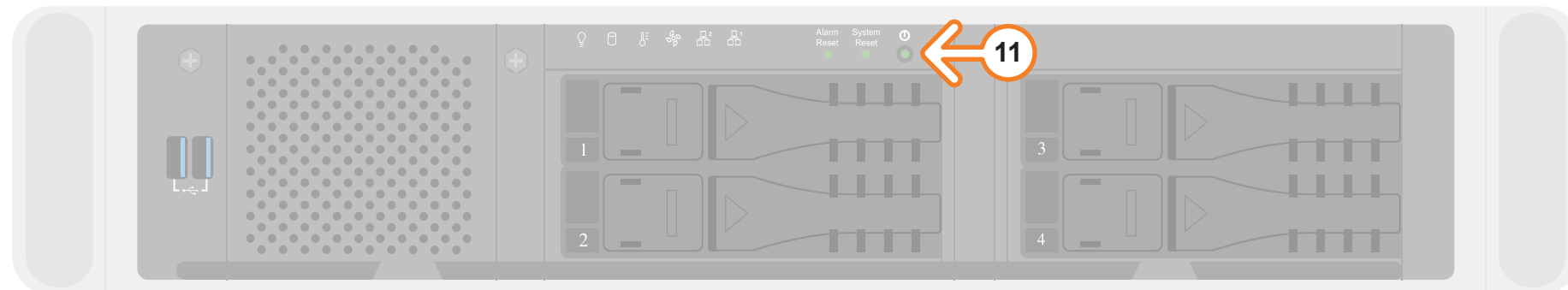
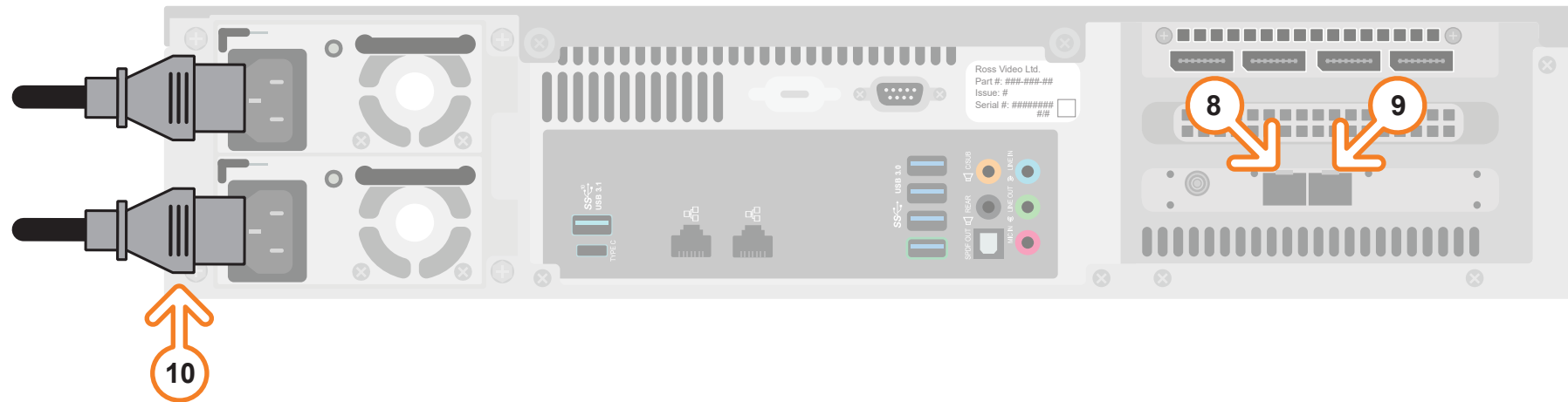
- 6 Plug an Ethernet cable from your Local Area Network into one of the **Ethernet** ports.  
*XPression systems can run standalone or accept a connection to a production network. The network connection is also used for the RossTalk / Smart GPI feature.*
- 7 If using SMPTE ST 2022-6 protocol, connect your house reference Genlock signal to the **REF** HD-BNC connector.  
*XPression systems accept analog blackburst or tri-level sync as reference inputs. Tri-level sync is recommended for HD installations.*

*Continued on other side...*

**?** **Need Help?**

Technical Support:  
1-844-652-0645 (North America)  
+800 1005 0100 (International)  
Email: [techsupport@rossvideo.com](mailto:techsupport@rossvideo.com)

## Getting Started continued



- 8** Insert a small form-factor pluggable (SFP) (customer supplied) into SFP cage 1 and attach the necessary networking cable.
- 9** If using redundancy, insert a small form-factor pluggable (SFP) (customer supplied) into the SFP cage 2 and attach the necessary networking cable.
- 10** Connect power cords from the AC Ports on the XPression system to the mains power.  
*XPression system power supplies are auto-sensing and can use either 110 VAC or 220 VAC.*
- 11** Press the **Power** button (⏻) on the front of the XPression system.  
*Ross Video recommends shutting down XPression systems from the Windows operating system.*
- 12** Click the **XPression** user account icon to log onto the system.
- 13** Launch XPression from the **Start** menu.

### For information on...

- operating XPression, see the "XPression User Guide" available in the C:\Archive folder
- maintenance of the XPression system, see the "XPression Maintenance Guide" in the C:\Archive folder
- other XPression features and functions, see the documents available in the C:\Archive folder